

LD0202 Brite-Consumer Driver

Product Overview:

The LD0202 OLED Driver is a low profile, 260mA or 368mA constant current source specifically designed for OLED panels. The LD0202 is particularly well adapted to work with OLEDWorks Brite panels.

The LD0202 PCBA version features small size, light weight, and a very low profile to accentuate and complement the unique thin feature of OLED Panels. An enclosed version is also available in a compact plastic case and is prewired.



Features:

- Overall dimensions (PCBA): 1.5" x 0.900 x 0.15"
- Input Voltage: 24 Min. (28VDC recommended)
- Output: 260mA or 368mA
- Dimming: 0-10V (IEC60929 compliant) (5%-100%)
- On-board protection against OLED panel shorts
- Efficiency: >92% (full load)
- Reverse Polarity Operation
- Open Circuit Protection
- Spike and Transient Protection

Applications:

- Architectural lighting
- Ceiling pendants and track lighting
- Shelf and cabinet lighting
- Marine lighting
- Elevator lighting

Certifications:

- UL8750, CSA, CE
- EMC: EN55022, EN61000-3-2, -3-3, -4-2, -4-3, -4-5, -4-6

Model Numbers:

<p>LD0202-01 260mA Driver PCBA LD0202-02 260mA Driver with Enclosure LD0202-03 368mA Driver PCBA LD0202-04 368mA Driver with Enclosure</p>

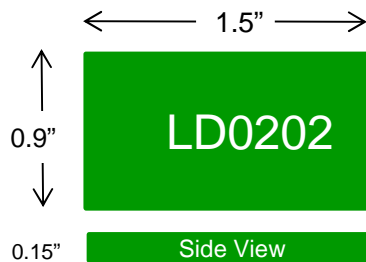
LD0202 Brite-Consumer Driver

Characteristics:

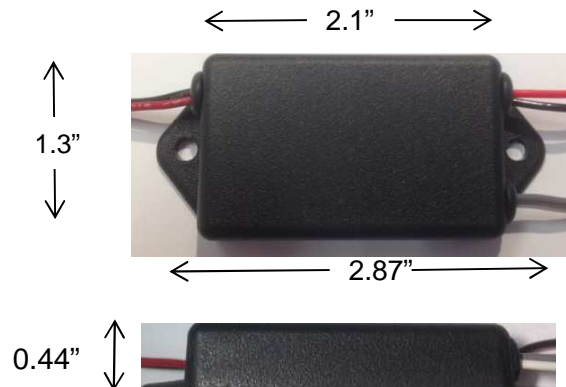
- Input voltage (Recommended for best performance over Brite OLED lifetime): 28 VDC
- Output voltage (Max): 26 VDC
- Efficiency: 92% (full load)
- Dimming Performance: 5% - 100%
- Operating Temperature: -20 to +50C
- Storage Temperature: -40 to +85C

Dimensions:

PCBA:



Enclosure:



- Power leads (20 AWG), DIM and OLEDWire Leads (22 AWG)

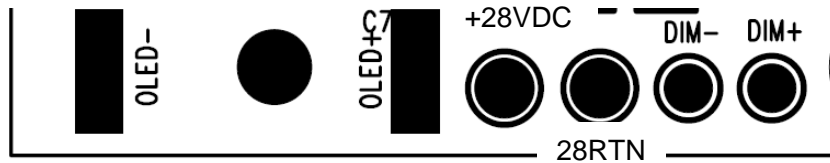
Application Information:

- The LD0202 is compatible with 0-10V dimmers (IEC60929 compliant) or can be dimmed with a 10k potentiometer

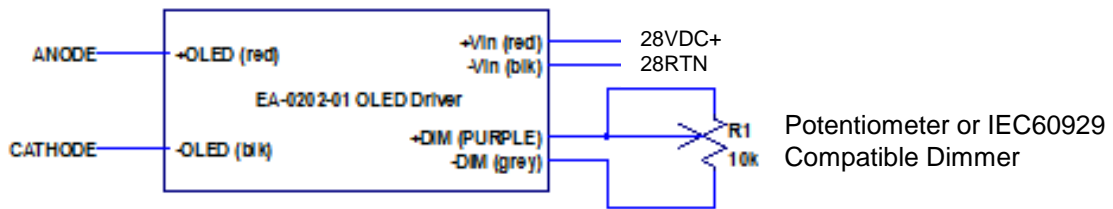
LD0202 Brite-Consumer Driver

Wiring Information:

- The PCBA wire connections are as shown below:



- The Enclosure wiring connections are as shown below:



Dimming Curve:

